

Advocate Health - Midwest

SHARE @ Advocate Health - Midwest

Aurora St. Luke's Medical Center Books,
Documents, and Pamphlets

Aurora St. Luke's Medical Center

June 2016

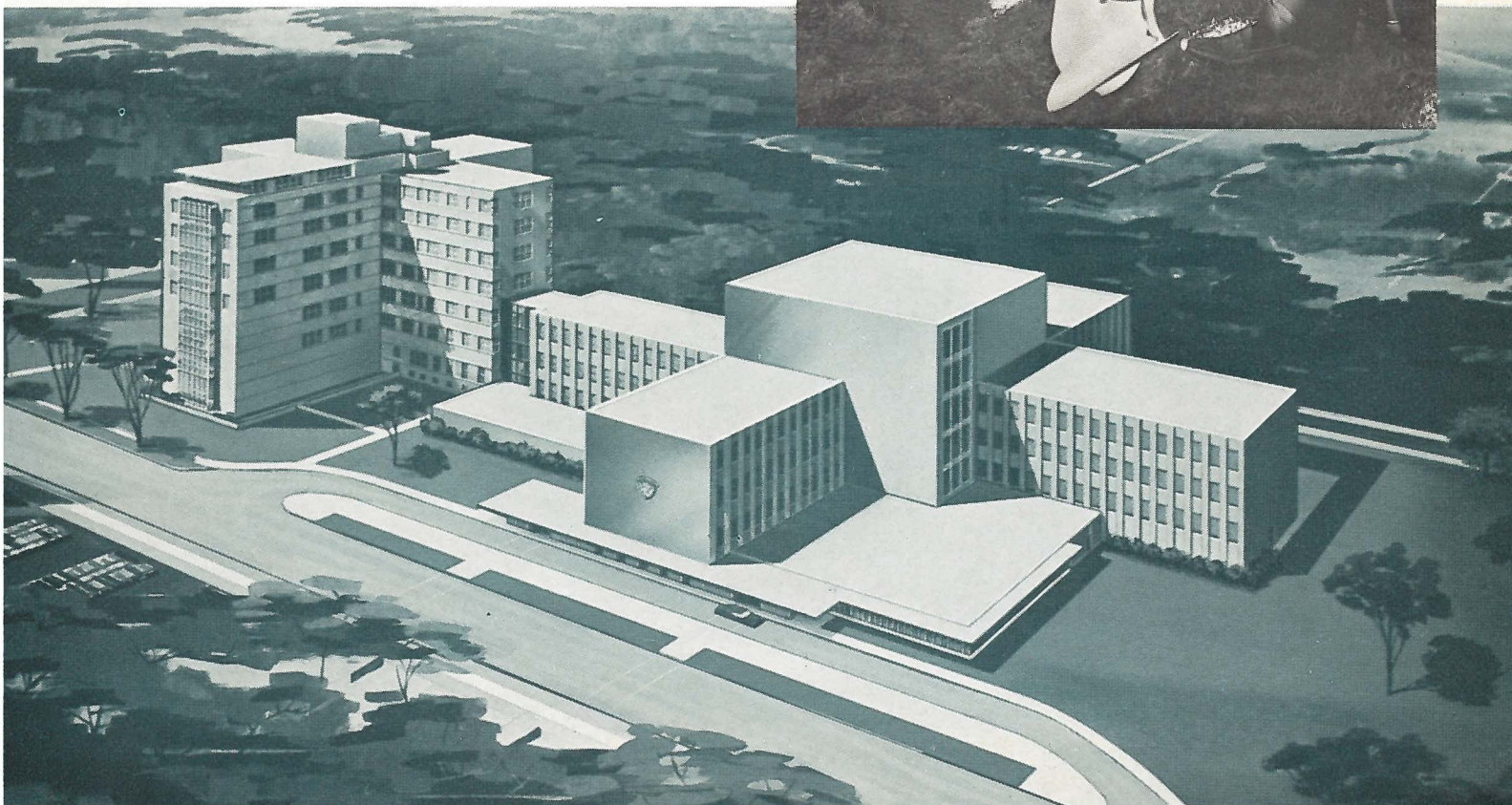
St. Luke's Hospital Annual Report, 1963

Advocate Aurora Health

Follow this and additional works at: https://institutionalrepository.aah.org/aslmc_books

St. Luke's // *ospital*

**ANNUAL
REPORT
...1963**





MERTON ELIHU KNISELY
Administrator

W. OKLAHOMA AVE. at S. 29th ST.

PHONE: ORchard 1-2900
MILWAUKEE, WISCONSIN 53215

To Friends of St. Luke's Hospital:

Our 35th year of service to the Greater Milwaukee community marked another significant step in the development of St. Luke's facilities to meet the needs of the future. After six years of planning construction began on our new addition. The 232 additional beds including units for rehabilitation and psychiatric care and equally needed ancillary facilities will enable St. Luke's to fulfill its role in providing care to the growing community.

We surpassed the \$2,500,000 goal of Phase I of the fund raising campaign and issued bonds for additional funds. Meantime, Phase II of the fund raising campaign has been postponed to comply with the wishes of the Hospital Area Planning Committee of the Greater Milwaukee Committee.

The past year and the future for St. Luke's are best described as exciting and challenging as we emphasize our three objectives: Service, Education and Research.

Operating statistics reproduced in this report demonstrate a high level of care provided the community. They reflect our ability as a growing hospital to help educate interns and residents as well as in-service refresher courses for practicing physicians. Training courses for technicians and practical nurses continue to be offered. Research by staff physicians was inspired and will be expanded in the future as the result of a number of new grants. Plans are progressing for the installation of a hyperbaric chamber offered the hospital by the Allis-Chalmers Manufacturing Co.

During the year 10 doctors were appointed to the medical staff which now totals 259 outstanding physicians.

The tremendous progress St. Luke's has made and the continued dedication and cooperation of the medical staff, hospital personnel and numerous friends in commerce and industry hold high promise of future gains for St. Luke's in its efforts to serve the public.

Sincerely,

A handwritten signature in dark ink, appearing to read "M. E. Knisely".

M. E. Knisely
Administrator

A handwritten signature in dark ink, appearing to read "H. E. Brumder".

H. E. Brumder
President

Where Friendly Care Enhances Medical Skill

ST. LUKE'S HOSPITAL

MILWAUKEE, WISCONSIN

SOURCE AND USE OF FUNDS DURING 1963

WHERE DID THE MONEY COME FROM?

Income from services rendered	\$4,437,104
Miscellaneous income — purchase discounts, gift shop, interest, etc.	25,091
	<u>\$4,462,195</u>
Less free care and other allowances	190,784
	<u><u>\$4,271,411</u></u>

WHERE DID THE MONEY GO?

Wages, salaries and fees	\$2,654,048
Medical and surgical supplies	567,518
Depreciation of buildings and equipment	352,534
Laundry, linen, housekeeping and general supplies ..	240,601
New equipment and facilities	184,089
Food and Dietary supplies	103,194
Fuel, water, electricity and telephone	98,001
Interest and debt retirement	71,426
	<u><u>\$4,271,411</u></u>

COMPARATIVE SERVICE TO THE COMMUNITY

	1958	1962	1963
Adult Admissions	9,843	11,260	10,951
Newborn Admissions	1,917	2,578	2,470
Total Outpatient Admissions	21,484	32,188	32,521
Surgical Procedures	4,835	5,341	5,206
Number of Laboratory Tests	143,340	181,390	178,351
Radiology — Diagnostic	26,524	31,357	31,129
Radiation Therapy	4,238	5,783	5,823
Physical Therapy Treatments	24,874	30,310	31,916

ACTIVITIES . . .

St. Luke's Hospital serves the Milwaukee metropolitan area in many ways in addition to its obvious role of providing care for patients. Activities in 1963 were representative of the broad continuing efforts by St. Luke's that yield health progress through foresight to the entire community.

At a cost of \$178,824 the hospital provided medical and related professional education and training for 116 men and women. Included were residents and interns furthering their medical education before entering practice; X-ray and medical technologists and nurse aides. This effort helps to assure the best available professional and technical personnel for the community's future.

Also in the field of medical education, St. Luke's medical staff held 164 seminars or meetings designed to supplement the profession's efforts to keep doctors abreast of developments.

The medical staff engaged in numerous research projects utilizing hospital facilities. The cost to the hospital, exclusive of the time and effort volunteered by the physicians, amounted to \$13,321.

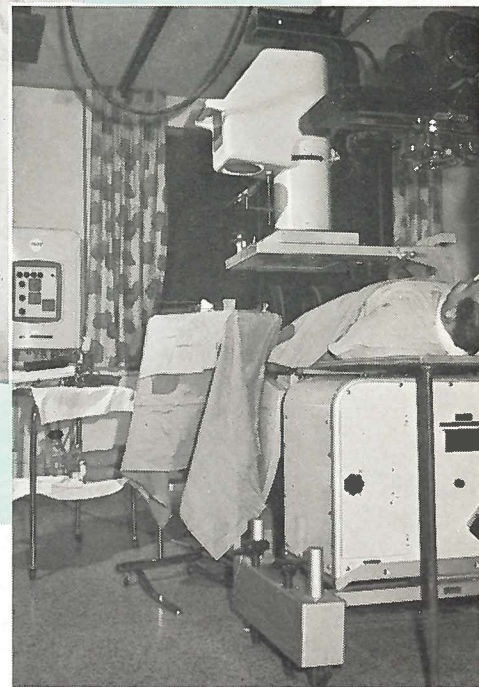
A total of \$69,476 was expended for new equipment that permits improved care, diagnosis and treatment for patients.

Continuing medical education at St. Luke's is illustrated by this scene during a regularly scheduled Clinical Pathological Conference at the hospital.



Keeping abreast of technical advances in the field of medicine is a constant challenge to the hospital. These often require the purchase of improved or new equipment. Typical are the two pieces of equipment shown in these photographs. The Schonander rapid film changer, far right, is an important diagnostic tool for the department of radiology. The machine takes six pictures per second giving sharp detail to circulation in the arteries and blood vessels and exposes the patient to less radiation than conventional X-ray equipment.

The gas liquid chromatograph, right, will do precise analysis on steroid hormones, amino acids and narcotics. The unit makes St. Luke's the first hospital in the midwest with a complete accurate steroid hormone analysis — a valued aid to the physician in making a diagnosis.



Tender, loving care is a vital ingredient to quality care as this young patient is learning.

Residents and interns visit a patient with a staff physician as part of their medical instruction.



D. W. CALVY, *Secretary-Treasurer*

GENERAL SURGERY	DEPARTMENT OF SURGERY				
	R. R. WATSON, Chief				
	J. J. Adamkiewicz	G. F. Flynn	D. J. McGrath	C. M. Schroeder	
	C. A. Bauer	J. J. Frederick	J. E. Morgan	G. O. Shaner	
	B. B. Becker	R. E. Galasinski	R. O. Mossey	M. B. Smith	
	J. F. Berg	U. E. Gebhard	J. J. Mueller	W. P. Stenborg	
	V. M. Bernhard	J. J. Gramling, Jr.	P. J. Niland	H. F. Twelmeyer	
	F. E. Berridge	P. F. Hausmann	T. J. Pendergast	T. Wall	
	R. L. Bolton	A. J. Krygier	M. A. Polacek	H. B. Wengelewski	
	D. E. Davidoff	T. J. LaSusa	R. A. Rufflo	W. J. Woloschek	
	H. N. Dricken	A. J. Levin	A. J. Savitt	J. F. Zimmer	
	G. S. Flaherty				
	DEEN&T	K. Hara, Chairman	F. Bechmann B. P. Churchill C. W. Keskey	W. C. Parks G. J. Roncke E. H. Schalmo	F. J. Schubert J. P. Wild
ORTHOPEDICS	P. J. Collopy, Chairman	K. S. George	E. K. Rath		
UROLOGY	J. Gilbert, Chairman	T. P. Borowski D. W. Calvy	E. R. Hanson J. T. Hotter	J. D. Silbar	
THORACIC SURGERY	D. Lepley, Chairman	B. J. Narodick	R. R. Watson	W. Weisel	
PROCTOLOGY	A. G. Schutte, Chairman	L. W. Hargarten J. V. Herzog	B. J. Klamecki	R. T. McCarty	
NEUROSURGERY	J. D. Levin, Chairman	R. H. Strassburger	D. P. Ullrich		
PLASTIC SURGERY	J. P. Docktor, Chairman	J. S. Kretchmar P. Natvig	S. Wynn		
PEDIATRIC SURGERY	M. Glicklich, Chairman	C. R. Turner			
INTERNAL MEDICINE	DEPARTMENT OF INTERNAL MEDICINE				
	J. V. PILLIOD, Chief				
	A. R. Baier	R. B. Fruchtman	J. Meyer	W. D. Shapiro	
	G. C. Bernhard	S. T. Gettelman	J. R. O'Connell	G. N. Spencer	
	D. Caine	M. Hardgrove	C. R. Olson	S. B. Stolp	
	T. L. Calvy	G. Inda	G. A. Oren	W. H. Thiede	
	M. J. Ciccantelli	L. F. Jermain	B. J. Peters	V. Turgai	
	J. E. Cordes	L. B. Kleinerman	G. W. Poindexter	W. C. Webb	
	H. L. Correll	M. A. Kottke	O. A. Sander	D. Williams	
	S. Fricano	J. P. Looze			
	ALLERGY	H. R. Weil, Chairman	R. D. O'Connor		
	PEDIATRICS	E. Thomas, Chairman W. T. Atkinson, Jr.	T. S. Buszkiewicz J. J. Czajka J. J. Homsey	R. C. Johnson M. G. Peterman	R. J. Snartemo H. J. Waston, Jr.
	GASTROENTEROLOGY	M. C. F. Lindert, Chairman	M. W. Garry	H. J. Kanin	

NEUROPSYCHIATRY	H. Veit, <i>Chairman</i>	F. J. Millen	J. E. Weber
DERMATOLOGY	G. O. Stubenrauch, <i>Chairman</i>	D. C. Bleil D. E. Hackbarth	R. Laubenheimer L. S. Markson F. H. Urban
INDUSTRIAL MEDICINE	C. Zenz, <i>Chairman</i>		M. P. Benoit
DEPARTMENT OF GENERAL PRACTICE			
	G. J. BERGMANN, <i>Chief</i>		
	I. L. Asinas	T. L. Johnston	L. E. Miller
	R. Balzer	S. H. Kash	M. Mitz
	R. O. Barnes	L. W. Kaufman	C. J. Mroczkowski
	E. J. Beil	C. J. Kienzle	M. Nefches
	R. J. Brown	H. M. Klopff	E. B. O'Leary
	C. L. Budny	R. R. Komar	A. H. Olsen
	J. F. Cary	Z. Kostich	E. J. O'Neill
	S. L. Chojnacki	W. L. Krygier	J. F. Orlovsky
	J. A. Clemence	E. F. Kuglitsch	A. F. Rodenbeck
	N. F. Damiano	J. R. Kuzdas	L. M. Rosenheimer
	M. F. Drozewski	M. Landsberg	G. Rumhoff
	A. I. Greenberg	A. Levine	E. Sabljak
	J. G. Halser	A. J. MacGillis	A. C. Schnapp
	J. V. Heil	J. A. Malone	C. R. Schneider
	T. A. Heller	C. R. Marlewski	F. X. Schuler
			Z. Slomovitz
			K. M. Smigielski
			K. J. Stollenwerk
			G. J. Stula
			J. E. Szymarek
			R. D. Thompson
			M. L. Weber
			S. C. Weisfeldt
			P. P. Wisniewski
			S. I. Wojcechowskyj
			R. C. Wolf
			S. Zawodny
			J. J. Zimmer
			W. P. Zmyslony
DEPARTMENT OF OBSTETRICS AND GYNECOLOGY			
	C. J. LEVINSON, <i>Chief</i>		
	D. J. Albrecht	R. J. Fritz	T. J. Kozina
	W. W. Baird	H. I. Gass	M. A. Krembs
	P. H. Biever	A. M. Gjud	J. A. Larkey
	J. J. Brady	N. M. Hilrich	E. G. Lathers
	W. J. Buggy	M. T. Jaekels	M. N. Lovett
	E. J. Drvaric	T. Jennings	C. F. McDonald
	J. R. Evrard	R. E. Johnson	L. C. Sass
	R. T. Flynn	S. A. Korducki	N. Sender
			R. F. Sortor
			D. P. Spyres
			V. N. Vitulli
			A. Watts
			G. S. Woodward
			H. M. Worsencroft
			M. G. Yatso
DEPARTMENT OF ANESTHESIOLOGY			
	M. J. DENIO, JR., <i>Chief</i>		
	D. J. Beltran	H. M. Raasch	A. E. Roethke
	W. E. Mateicka		R. L. Temple
DEPARTMENT OF PATHOLOGY			
	B. E. CLARKE, <i>Chief</i>		
	J. M. Pawlowski	R. A. Scheidt	R. O. Peach
DEPARTMENT OF RADIOLOGY			
	H. H. WRIGHT, <i>Chief</i>		
	A. B. Fidler	J. E. Habbe	C. E. Schmidt
DEPARTMENT OF PSYCHIATRY			
	E. C. WELSH, <i>Chief</i>		
	R. Piaskoski		



OFFICERS:

Herbert E. Brumder,
President

William M. Chester, Jr.,
1st Vice. Pres.

John E. Koenitzer,
2nd Vice Pres.

Leonard E. Zastrow,
Treasurer

Edward E. Olson,
Secretary

BOARD OF DIRECTORS

Herbert E. Brumder

John E. Koenitzer

Stanley L. Rewey

William M. Chester, Jr.

Thomas C. Kurth

Walter H. Stiemke

Howard T. Foulkes

Ebner F. Luetzow

Carl T. Swenson

Kenneth R. Geist

Herman Menck

Theodore R. Wieseman

Arthur L. Grede

Alex F. North

Leonard E. Zastrow

Richard G. Jacobus

Edward E. Olson

Joseph T. Johnson

Wilbert G. Prasse

HONORARY BOARD OF DIRECTORS:

Charles R. Dowdy

The Rev. J. F. Fedders

Jacob A. Holzer

Carl E. Meyer

Otto C. Stoebe

ADMINISTRATION

Merton E. Knisely,
Administrator

Gordon Flom,
Assistant Administrator

Lowell M. Vandervort,
Associate Administrator

Miss Bernice Larson, R.N.,
Assistant Administrator

ST. LUKE'S HOSPITAL
MILWAUKEE, WISCONSIN