

Advocate Health - Midwest

## SHARE @ Advocate Health - Midwest

---

Historical Documents - Combined

Advocate Health - Midwest History

---

### Evangelical Hospital of Chicago and Training School for Nursing : A Souvenir of our Twenty-Fifth Anniversary 1910-1935

Advocate Aurora Health

Follow this and additional works at: <https://institutionalrepository.aah.org/alldocuments>

---





# EVANGELICAL HOSPITAL

OF CHICAGO

AND

## TRAINING SCHOOL FOR NURSING



A SOUVENIR OF OUR TWENTY-FIFTH  
ANNIVERSARY

1910-1935



5421 SOUTH MORGAN STREET  
CHICAGO, ILLINOIS

MCMXXXV



GENERAL VIEW OF HOSPITAL BUILDINGS



GUSTAV A. KIENTLE, D. D., *Superintendent*

BOARD OF DIRECTORS

REV. JOSEPH A. GEORGE, *President*

MR. WILLIAM F. BAZNER

MR. HENRY G. KOESTER

MR. ALBERT H. BROMANN

MR. FRANK H. KOEPKE

REV. AUGUST FLEER

REV. HENRY E. LAMBRECHT

REV. BENJAMIN FREESE

MR. ERNEST W. RIESBECK

REV. ADOLPH W. FRUECHTE

REV. FRED P. UMBECK

MR. PAUL F. KOENIG, *Secretary and Counsel*

THE EVANGELICAL HOSPITAL OF CHICAGO

---

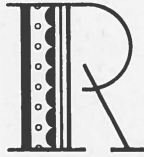


GUSTAV A. KIENLE, D. D., *Superintendent*

MISS IDA OWEN, *Dean of Nurses*

MISS MINA HAUSMANN, *Superintendent of Nurses*

## DEDICATION



REALIZING THAT ONE GENERATION STANDS UPON THE SHOULDERS OF THE PRECEDING ONE, WE SHOULD NOT ENTER THE PORTALS OF OUR HOSPITAL UPON THIS SILVER ANNIVERSARY WITHOUT REVELING IN THE TRADITIONS OF THE PAST AND TURN IN OUR THOUGHTS TO THE MEN AND WOMEN OF YESTERYEAR WHO MADE THIS ANNIVERSARY POSSIBLE. WE SHOULD ERECT IN OUR HEARTS MEMORIALS TO THE MINISTERS WHO CONCEIVED THE IDEA TO APPLY THE TEACHINGS OF THE HEALING CHRIST AND BRING INTO EXISTENCE THE EVANGELICAL HOSPITAL OF CHICAGO, FIRST KNOWN BY THE NAME OF GERMAN EVANGELICAL DEACONESS HOSPITAL. WE SHOULD REMEMBER THE BUILDERS OF OUR THREE UNITS COMPRISING THE HOSPITAL BUILDING AND THE TWO UNITS OF OUR NURSES' RESIDENCE BUILDING WITH GRATEFUL HEARTS, AT THE SAME TIME REMEMBERING THOSE WHO BY THEIR GIFTS MADE THESE BUILDINGS POSSIBLE. OUR THOUGHTS SHOULD TURN TOWARD THE DOCTORS WHO HAD FAITH IN THE INSTITUTION AND ENTRUSTED THEIR PATIENTS INTO THE CARE OF THE HOSPITAL AND WE SHOULD EVER GRATEFULLY REMEMBER THE SACRIFICING NURSES WHO GAVE OF THEIR BEST TO THE MASTER AND HIS SUFFERING BRETHREN. TO ALL OF THESE WE REVERENTLY DEDICATE THIS VOLUME.





SCENE ON THE OCCASION OF GROUND BREAKING, 1910

## HISTORICAL SKETCH

IN ORDER to visualize the story of the Evangelical Hospital of Chicago it becomes necessary that we look across the ocean to the old Fatherland for the wave upon which the idea of the Diaconate came to the shores of our own beloved country in the year 1890. In all the larger denominations in our country Deaconess Societies were organized with the view and intention of enlisting young women in this great and noble work of the church, to care for the sick and needy in the various congregations. In our own Evangelical Church Deaconess Societies had been organized in Dayton, Ohio, St. Louis, Missouri, Buffalo, New York, and Indianapolis, Indiana, with the result of building Deaconess Hospitals in the above mentioned cities. These hospitals from the very beginning exerted a wholesome and benevolent influence in their respective communities. After operating these hospitals for about 20 years, other Evangelical centers, by their example, became conscious of the need as also of the benefits which could be conveyed to our people, and in the early 1900's other centers like Cincinnati, Ohio; Chicago, Illinois; Lincoln, Illinois; Milwaukee, Wisconsin; Marshalltown, Iowa, and Detroit, Michigan, became active in organizing Deaconess Societies, enlisting young christian women as deaconesses to supply the nursing personnel of the hospitals which were to be erected for the care of the sick and maimed who, like the poor, are always with us. Records are not available which disclose the activities of the movement prior to the year 1906.

However in the year 1906 a call was sent out by Rev. Benjamin C. Ott to the congregations of the Evangelical Church of Chicago stating as the purpose of the meeting "to organize a Deaconess Society within our city". This meeting held at Salem Church, Chicago, resulted in the organization of the Evangelischer-Diakonie-Verein of Illinois. A formal petition for a corporate charter was presented to the Secretary of State of the State of Illinois whereupon the Evangelical Hospital Association of Chicago was chartered as a charitable corporation. This petition is of great interest because it reveals the names of the original board of directors and of members prominent in the promotion of the organization and is therefore presented with this sketch.

The charter was issued on September 31, 1906.

Monthly meetings were held and in the year 1910 this Deaconess Society had a membership of 600, each one contributing annually the sum of \$2.00. So many having been drawn into the charmed circle of this particular outstanding religious movement, we can easily understand that negotiations were carried on and plans were formulated to choose a suitable site upon which an Evangelical hospital should be built to give tangible and visible expression to the idea cherished for 4 years to own and operate a temple of healing under the guidance and auspices of the Evangelical congregations of Chicago and vicinity.

Considering the location of our churches, the selection of a site for this hospital must have been a perplexing task.

## THE EVANGELICAL HOSPITAL OF CHICAGO

---

Since that time the location of the Hospital site has been justified because of the development of great industries, closer population, adequate transportation and the increase in numbers and membership of our churches in the immediate vicinity of the institution. The corner stone to the 2-story building with an English basement was laid in the Fall of 1910 — this building was erected to the glory of God and dedicated to the service of humanity on August 22, 1911, accommodating the offices, laboratories, operating rooms, and 60 beds. The contract price for this building was \$19,950.18.

From the page which tells "The story of growth in figures," we may surmise that the selection of the site was a judicious one, evidently filling a great need for a hospital in this section of our city. From small beginnings the patronage of the hospital had grown in the year 1920 to such an extent that the hospital was crowded and patients had to be accommodated on porches and corridors; the cry for larger accommodations and facilities became so loud that steps were taken by the Board of Directors to create funds for the building of a Greater and Larger Evangelical Hospital. A campaign was organized to solicit the members of our own church,



LAYING THE CORNERSTONE OF ORIGINAL BUILDING

C O P Y

"We, the undersigned, BENJAMIN OTT, LOUIS KOHLMANN, HERMANN MULLER, PAUL FOERSTER and FRED KRESSMANN, citizens of the United States, propose to form a corporation under an Act of the General Assembly of the State of Illinois, entitled "An Act concerning Corporations," approved April 18, 1872, and all acts amendatory thereof; and for the purpose of such organization we hereby state as follows; to-wit:

1. The name of such corporation is EVANGELISCHER DIAKONIE VEREIN OF ILLINOIS.

2. The object for which it is formed is *to maintain and support a hospital and deaconess home in which sick are nursed by educated and trained deaconesses and in which deaconesses receive training.*

3. The management of the aforesaid EVANGELISCHER DIAKONIE VEREIN OF ILLINOIS shall be vested in a Board of *fifteen* Directors, who are to be elected *Annually*.

4. The following persons are hereby selected as the Directors to control and manage said corporation for the first year of its corporate existence, viz: BENJAMIN OTT, LOUIS KOHLMANN, HERMANN MULLER, PAUL FOERSTER, FRED KRESSMANN, WILLIAM HATTENDORF, ERNST RAHN, ADOLPH NIEDERGESAEZ, HERMANN SCHMIDT, HENRY J. SCHILL, CHARLES STRAUBURG, FRITZ RADTKE, OSWIN F. KOCH, HENRY RATMEYER, and HENRY THIELE.

5. The location is in the city of *Chicago* in the county of *Cook* in the State of Illinois, and the postoffice address of its business office is at No. *79 5th Avenue* in the said city of *Chicago*.

*Signed,*

REV. BENJAMIN OTT  
LOUIS KOHLMANN  
HERMANN MULLER  
PAUL FOERSTER  
FRED KRESSMANN.

STATE OF ILLINOIS, } s.s.  
County of *Cook*

I, *John Funk*, a Notary Public in and for the County and State aforesaid, do hereby certify that on this *12th* day of *September*, A. D., *1906*, personally appeared before me BENJAMIN OTT, LOUIS KOHLMANN, HERMANN MULLER, PAUL FOERSTER, and FRED KRESSMANN, to me personally known to be the same persons who executed the foregoing certificate and severally acknowledged that they had executed the same for the purposes therein set forth.

IN WITNESS WHEREOF, I have hereunto set my hand and seal the day and year above written.

(SEAL)

JOHN FUNK  
Notary Public.



SUPERINTENDENT WEBER, MEMBERS OF THE BOARD OF DIRECTORS, STAFF AND NURSES WITNESS GROUND BREAKING FOR THE NEW HOSPITAL



as well as the general public, to create a building fund, which campaign resulted in subscriptions totaling \$120,000.00, a sum not adequate to carry out the plans which were drawn by the architect.

It took a great amount of faith on part of the men directing the affairs of the hospital at that time to go ahead in carrying out at least part of the plans which had been made, building the South wing and the power house of this Greater Evangelical Hospital, calling for an expenditure of \$361,237.11. A mortgage bond issue was offered for sale in the sum of \$250,000.00, which was readily sold so that the building could be completed and equipped and was dedicated and opened to the service of our ever increasing number of patients on Sunday, September 9, 1923. This indebtedness has at this date been reduced to \$80,000.

Referring again to the story of growth in figures we can readily see the increasing numbers of patients admitted to our hospital from 1924 to 1927, again confronting the administration with the necessity of providing more room for those who sought help and care within the walls of our institution. Another building program was set on foot, calling for the erection of the North wing of the hospital which was built together with a new building for the laundry at the contract price of \$158,791.50. In quoting the cost of these buildings the equipment is not included and we can estimate X-Ray and Laboratory, power house, operating room equipment, and furniture for the patients' rooms and administration offices at the sum of \$100,000.00.

In August, 1928, the new North wing was put into operation and for three years, up to 1932, our Hospital operated above average capacity.

In telling the story of the Hospital we cannot refrain from including the building of the Nurses' Residence which was also erected in three stages, according to the need and financial ability of the organization. The first building did not only house the nurses but also answered the purpose of a residence for the superintendent. With an enlarged hospital, a larger staff of nurses became a requisite and the superintendent's residence was turned into nurses' quarters. The Nurses' Residence today has 100 rooms and is housing the nursing staff of the hospital which requires 84 graduates and training school nurses for the operation of the institution. Capital invested in the nurses' residence building called for \$29,120.02 for the first unit; \$61,248.63 for the second unit; \$15,909.17 for the third unit representing, together with furnishings and equipment, an outlay of approximately \$100,000.00.

During the 25 years of the operation of the hospital, three superintendents have served the institution. Rev. John Bollens, who bore the brunt of the days of small beginnings, served faithfully under trying circumstances until 1913 when he resigned to reenter the pastorate. Rev. Fred Weber was called to succeed him in the management of the institution. Rev. Weber served faithfully and was largely instrumental in the erection of the South wing of the hospital. He enjoyed the management of the larger institution until July, 1924, when he resigned the superintendency. His successor, the present incumbent, Rev. G. A. Kienle was

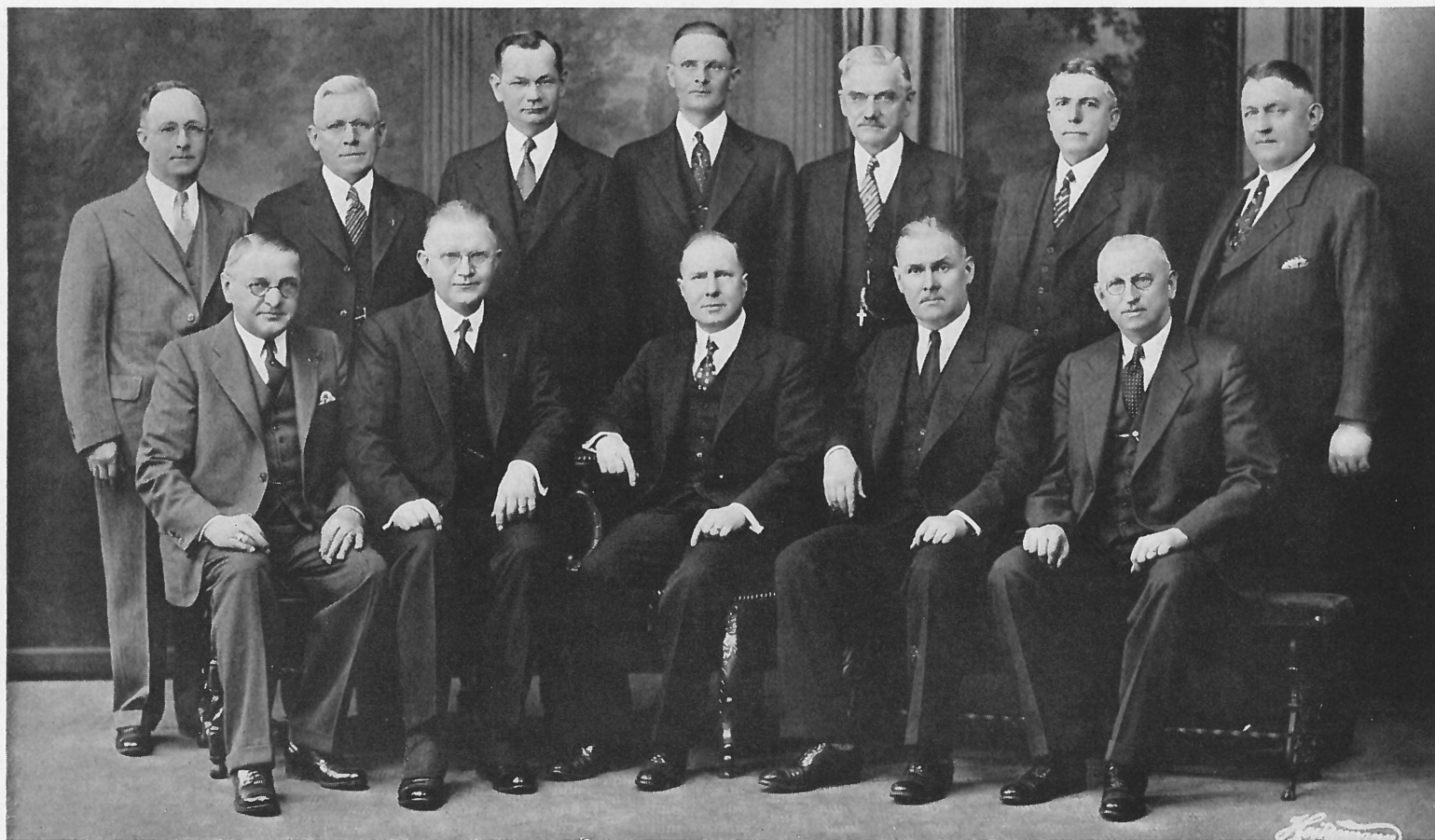


ENTRANCE LOBBY AND BUSINESS OFFICE

called into service and has been directing the affairs of the hospital from October, 1924, until the present. During the incumbency of the present superintendent, the Hospital expanded and advanced to a position where it now enjoys the reputation of being one of the eight greatest hospitals in our city and ranks as one of the outstanding in the United States, being accredited by the American College of Surgeons and the American Medical Society. This success is attributable to the untiring efforts and outstanding ability of the present superintendent and the co-operation he has received from an efficient nursing personnel, a large staff of loyal, faithful and prominent physicians and surgeons, and an exacting supervision of an active and understanding Board of Directors.

In order to make this sketch complete we must also record the change of name from "GERMAN EVANGELICAL DEACONESS HOSPITAL" to the EVANGELICAL HOSPITAL OF CHICAGO and as such we are now operating this general hospital giving service in general medicine, general surgery, cancer, dermatology, diabetes, gynecology, neurology, obstetrics, ophthalmology, orthopedics, otolaryngology, pediatrics, psychiatry, and urology, operating as special departments an X-Ray and Clinical and Pathological Laboratory, with physio-therapy, electro-cardiograph, and a deep therapy machine with high voltage for the treatment of cancer. The present hospital accommodates 200 patients, and 60 bassinets in the Obstetrical Department.

The future program of the Evangelical Hospital of Chicago carries with it great responsibilities but also great promises. May the achievements of the past be the foundation for greater and broader usefulness in the future. We commend this future into the hands of Him who said "heal the sick" and "I was sick and ye visited Me". May we see our duty to obey the Master's command and to do His will faithfully.



BOARD OF DIRECTORS, 1935

Seated: MR. WILLIAM F. BAZNER  
*Fin. Secretary*

REV. ADOLPH W. FRUECHTE  
*Vice President*

REV. JOSEPH A. GEORGE  
*President*

MR. PAUL F. KOENIG  
*Sec'y and Counsel*

MR. ALBERT H. BROMANN  
*Treasurer*

Standing: MR. H. G. KOESTER

MR. E. W. RIESBECK

REV. H. E. LAMBRECHT

REV. B. FREESE

REV. A. FLEER

REV. F. P. UMBECK

MR. F. H. KOEPKE

## THE BOARD OF DIRECTORS

**T**WELVE men tried and true chosen from the delegates to the Evangelical Hospital Association of Chicago — direct and control the affairs of the Evangelical Hospital of Chicago. The institution has been fortunate in the choosing of men — six pastors and six laymen — who have given of time and talent unstintingly in a service which reflects itself in the development of our hospital from humble and small beginnings to one of the leading hospitals in the City of Chicago and in our denomination.

The present Board of Directors is constituted as follows:

### OFFICERS

REV. JOSEPH A. GEORGE	. . . . .	<i>President</i>
REV. A. W. FRUECHTE	. . . . .	<i>Vice-President</i>
MR. PAUL F. KOENIG	. . . . .	<i>Secretary and Counsel</i>
MR. A. H. BROMANN	. . . . .	<i>Treasurer</i>
MR. WM. F. BAZNER	. . . . .	<i>Financial Secretary</i>

### EXECUTIVE COMMITTEE

REV. A. FRUECHTE	MR. PAUL F. KOENIG
REV. B. FREESE	MR. WM. F. BAZNER
REV. JOSEPH A. GEORGE, ex-officio	

### NURSING COMMITTEE

REV. A. FLEER	REV. H. E. LAMBRECHT	REV. F. UMBECK
---------------	----------------------	----------------

### FINANCIAL COMMITTEE

MR. WM. F. BAZNER	MR. E. W. RIESBECK
MR. A. H. BROMANN	MR. H. G. KOESTER

### EFFICIENCY COMMITTEE

MR. A. H. BROMANN	MR. E. W. RIESBECK	MR. FRANK H. KOEPKE
-------------------	--------------------	---------------------

In the years gone by the following men served as President of the Board of Directors:

REV. G. A. NIEDERGESAEISS	REV. J. J. SILBERMANN	
MR. ALBERT WEHRWEIN	REV. JACOB PISTER	MR. W. H. GIESECKE

Rev. Niedergesaess and Rev. Pister have gone to their reward — the others are still with us to rejoice with us on this, our Silver Jubilee.





## CONGREGATIONS

**L**IST OF Congregations comprising "THE EVANGELICAL HOSPITAL ASSOCIATION OF CHICAGO" successor to "THE EVANGELISCHER DIAKONIE VEREIN OF ILLINOIS".

ST. JOHN'S — *Arlington Heights, Illinois*  
 ST. JOHN'S — *Bensenville, Illinois*  
 ST. PAUL'S — *Blue Island, Illinois*  
 CHRIST — *Des Plaines, Illinois*  
 IMMANUEL — *Dolton, Illinois*  
 ST. PETER'S — *Elmhurst, Illinois*  
 CHURCH OF PEACE — *Harvey, Illinois*  
 ST. PAUL'S — *Homewood, Illinois*  
 EV. PROTESTANT — *La Salle, Illinois*  
 ST. JOHN'S — *Melrose Park, Illinois*  
 ST. PAUL'S — *Monee, Illinois*  
 ST. PETER'S — *Niles Center, Illinois*  
 EV. LUTHERAN — *Oak Park, Illinois*  
 ST. JOHN'S — *Peotone, Illinois*  
 ZION'S — *Dyer, Indiana*  
 IMMANUEL'S — *Hammond, Indiana*  
 BETHANY — *Chicago*  
 BETHEL — *Chicago*  
 BETHLEHEM — *Chicago*  
 FIRST ENGLISH EV. — *Chicago*  
 GETHSEMANE — *Chicago*  
 GRACE — *Chicago*  
 IMMANUEL — *Chicago*  
 NAZARETH — *Chicago*  
 NICOLAI — *Chicago*  
 PEACE — *Chicago*  
 ST. ANDREW'S — *Chicago*  
 ST. JOHN'S — *Chicago*  
 ST. LUKE'S — *Chicago*  
 ST. PAUL'S — *Chicago*  
 ST. PETER'S — *Chicago*  
 ST. PHILLIP'S — *Chicago*  
 ST. STEPHEN'S — *Chicago*  
 SALEM — *Chicago*  
 TRINITY — *Chicago*  
 ZION'S — *Chicago*  
 ZION'S (Auburn Park) — *Chicago*  
 EV. HOSPITAL STAFF — *Chicago*  
 EV. HOSPITAL ALUMNAE — *Chicago*  
 WOMEN'S AUXILIARY — *Chicago*

REV. M. L. STRAUBE  
 REV. H. BARTH  
 REV. B. FREESE  
 REV. GEO. GOEBEL  
 REV. P. H. BASSLER  
 REV. F. FRANKENFELD  
 REV. J. ELLERBRAKE  
 REV. H. G. KROEHLER  
 REV. EMANUEL CRUSIUS  
 REV. W. J. CRAMER  
 REV. H. BLOESCH  
 REV. P. E. WINGER  
 REV. H. H. SENNE  
 REV. O. LUTHE  
 REV. E. BLOESCH  
 REV. C. SCHAEFFER  
 REV. H. W. DINKMEYER  
 REV. J. GOEBEL  
 REV. A. W. FRUECHTE  
 REV. L. W. GOEBEL  
 REV. W. KOCHHEIM  
 REV. KARL H. MEYER  
 REV. H. J. SCHICK  
 REV. F. P. UMBECK  
 REV. G. PAHL  
 REV. H. J. BRODT  
 REV. H. H. MOELLER  
 REV. B. H. LEESMANN  
 REV. R. C. KIENLE  
 REV. G. SCHERGER  
 REV. H. E. LAMBRECHT  
 REV. A. FLEER  
 REV. B. C. OTT  
 REV. J. A. GEORGE  
 REV. J. KIRCHER  
 REV. A. GAEBE  
 REV. A. J. KOCH  
 DR. P. G. PAPSDORF, *Sec'y.*  
 MISS B. FROOK  
 MRS. B. KNAPHURST



NURSES' RESIDENCE AND TRAINING SCHOOL

## OUR NURSING STAFF

SINCE THE hospital was organized originally as a "Deaconess Hospital" it was most natural that the call for workers which was heralded through our congregations was a call for deaconesses; — "young Christian women with high ideals, with outspoken Christian character and a sincere religious conviction combined with a heart filled with love and sympathy and a quick response for duty — women who would be willing to assume the obligations and the vows of a consecrated deaconess".

When the hospital opened its doors for service, provisions should have been made to have the nursing personnel made up of trained and consecrated deaconesses. The Deaconess Mother House at St. Louis, Missouri, which had been in operation for about twenty years, had trained a number of young women for the deaconess work and were willing to meet the demand for deaconesses as it came to them from all sides but the supply was not adequate to the demand and therefore the deaconess idea had to be supplemented with a school of nursing.

Sisters Anna Bueshel and Anna Nissel were graciously assigned by the mother house at St. Louis to the work in our hospital and surely rendered a wonderful and valuable service, but as they had only human physical strength they could not cope with the work which from the very beginning made such large demands upon a trained nursing force. And thus the calling into service of the trained nurse marked the passing of the deaconess cause in our hospital and gradually brought about the organization of the training school for nurses which in 1919 was accredited by the State authorities.

Two sisters, Alma Wiegman and Minnie Volz, were consecrated; these were followed by the first class of six members, who were known as graduate sisters and afterward were incorporated into the ranks of graduate nurses receiving their R. N. after having passed the State examination. With the organization of a training school for nurses came a large influx of young women desiring to be trained as professional nurses. From the years 1915 to 1924, fifty-two were graduated from the training school. Beginning with the year 1925 the school experienced a steady increase of pupils which was only natural because of the fact that a larger hospital presented a greater need for a larger nursing force. The reputation of the hospital and the training school was of such high character it attracted a great many young women, and from 1925 up to the present writing one hundred and sixty-six young women were graduated from our training school.

Those who served as heads of Nursing Department were:

1912-1913	. . . . .	SISTER CHARLOTTE PFEIFFER
1913-1919	. . . . .	SISTER ANNA BUESHEL
1919-1920	. . . . .	MISS GERTRUDE SCHUCHERT
1920-1922	. . . . .	MISS META WILKE
1922-1924	. . . . .	MISS MARIE RUDNICK
1924-1925	. . . . .	MISS CHRISTINE HENDRIE
1925- up to the present writing	. . . . .	MISS MINA HAUSMANN



THE EVANGELICAL HOSPITAL OF CHICAGO

---



HEADS OF DEPARTMENTS AND FLOOR SUPERVISORS



GRADUATE NURSING STAFF



Of these the first two were consecrated sisters; three, Miss Schuchert, Miss Rudnick, and Miss Hausmann were graduates of our own school; Miss Wilke and Miss Hendrie were graduates of the Presbyterian Hospital Training School.

Led by the faithful Superintendent of Nurses, Miss Mina Hausmann, and instructed by our Dean, Miss Ida Owen, we are now efficiently training young women for the great and noble profession of nursing. The standards established in our hospital are the highest — entrance into the training school requires a full four years course of high school education. The instruction in the school is given by the men on our medical staffs, the superintendents, and the supervisors of the various departments, and this instruction is of a high type, which has the approval and commendation of those who inspect our hospital and give us their approbation. All graduates of the school have passed the State Board examination, and members of all future classes will be permitted to take their State examinations in order that they may receive their R. N. which entitles them to practice their profession, either in general hospital work or in any other field of labor they may choose. Under the leadership of our Superintendent of Nurses and her assistant, the following nursing personnel are in service: thirteen departmental supervisors; ten graduate staff nurses; fifteen Senior, twenty Intermediate, and twenty-six Junior Pupil nurses.

The graduates of our training school continue their affiliation with their Alma Mater by an Alumnæ Association, an organization which keeps them in touch with the work of the hospital and by a tie of common interest and friendship keeps the graduates in touch with one another. This Alumnæ Association has undertaken a wonderful work in soliciting from their ranks one hundred subscribers to a \$10,000.00 Endowment Fund; so far nineteen pledges have been paid in full; ten have subscribed and are paying their pledges on the installment plan; others are being solicited and will surely do their bit when the depression is lifted and remunerative work again will be their portion. \$2000.00 are invested in Evangelical bonds, the revenue of which is applied to the care of those, who have subscribed to the Alumni Endowment Fund, when they are sick and in need of hospital care. May the day be not far off when we can announce the completion of the raising of this fund which will always be a memorial of gratitude from those who have received their professional training in the Evangelical Hospital Training School for Nurses.



HELEN M. BIBB



MARY LOUISE HAINES



ANN G. N. FOLKEDAHL



E. ELJIE BURGHARDT



HENRIETTA TECKENBROCK

# Evangelical Hospital of Chicago School of Nursing



MARION L. WITT



LEONA K. PFEIFFER  
VICE-PRESIDENT



VERNA E. COOK  
PRESIDENT



FRANCES H. FLEMING  
SECRETARY



JOSEPHINE H. DUCHOWICZ  
TREASURER

CLASS



of 1935



SYLVIA J. HOFFMAN



ALBERTHA S. STAFFEL



PHYLLIS V. JOHNSON



PAULA J. KUEHNERT



VIRGINIA R. WRIGHT

# The Silver Jubilee Class

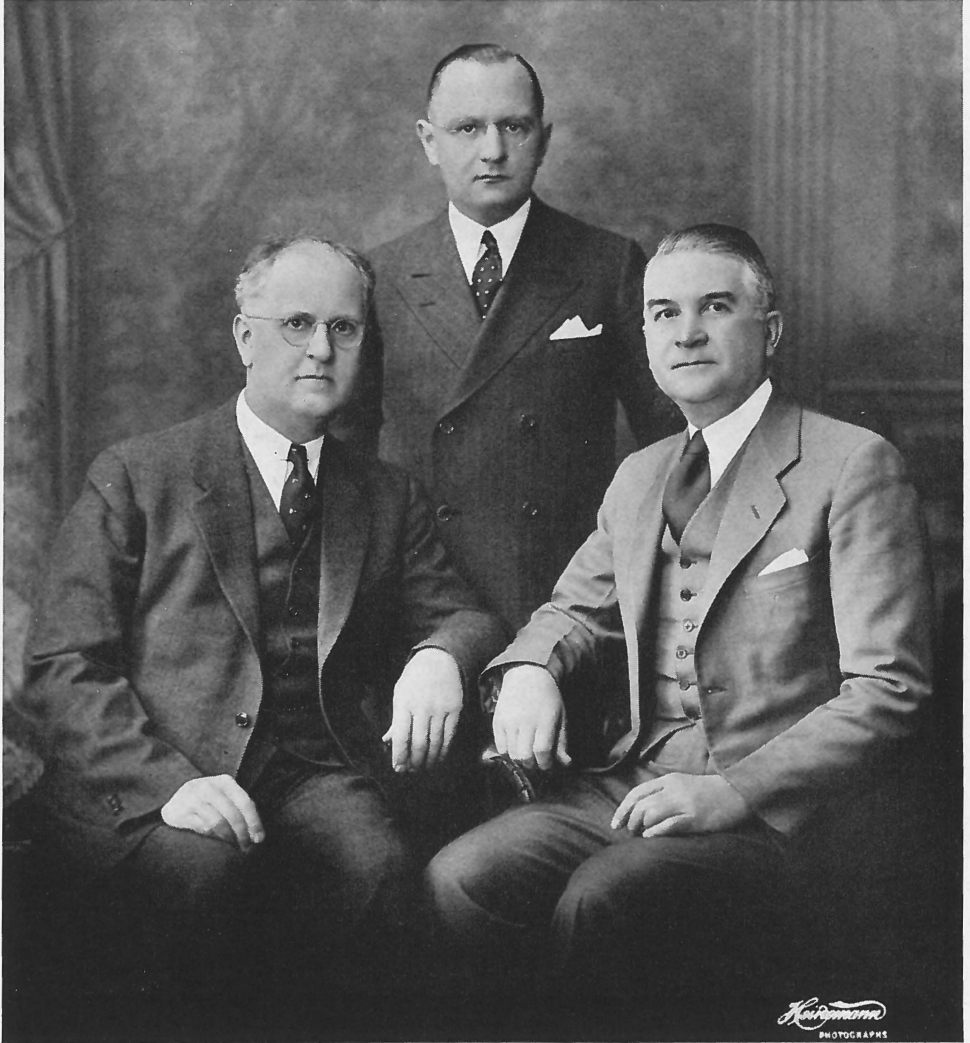
## THE SILVER JUBILEE CLASS

1935

- |  |                        |
|--|------------------------|
| HELEN M. BIBB                                    | Chicago, Illinois      |
| <i>Her own thoughts are her best companions.</i> |                        |
| A. ELJIE BURGCHARDT                              | Chicago, Illinois      |
| <i>A friend in need is a friend indeed.</i>      |                        |
| VERNA E. COOK                                    | Neenah, Wisconsin      |
| <i>There is no wisdom like frankness.</i>        |                        |
| JOSEPHINE H. DUCHOWICZ                           | Chicago, Illinois      |
| <i>There never was a word called can't.</i>      |                        |
| FRANCES H. FLEMING                               | Hoopeston, Illinois    |
| <i>One determined within is sure to win.</i>     |                        |
| ANNA N. FOLKEDAHL                                | Ettrick, Wisconsin     |
| <i>There is sunshine in her smile.</i>           |                        |
| MARY L. HAINES                                   | South Bend, Indiana    |
| <i>Determination is sure of salvation.</i>       |                        |
| SYLVIA J. HOFFMAN                                | Portland, Oregon       |
| <i>Never ask why but keep your hopes high.</i>   |                        |
| PHYLLIS V. JOHNSON                               | Chicago, Illinois      |
| <i>Quiet, sincere, capable, and lasting.</i>     |                        |
| PAULA J. KUEHNERT                                | Crystal Lake, Illinois |
| <i>Hitch your wagon to a star.</i>               |                        |
| LEONA K. PFEIFFER                                | Chicago, Illinois      |
| <i>A merry heart that laughs at care.</i>        |                        |
| ALBERTHA STAFFEL                                 | Chicago, Illinois      |
| <i>A task neat, is a task complete.</i>          |                        |
| HENRIETTA E. TECKENBROCK                         | Metropolis, Illinois   |
| <i>A steady tread and a level head.</i>          |                        |
| MARION L. WITT                                   | Chicago, Illinois      |
| <i>Quiet, observing, tender and true.</i>        |                        |
| VIRGINIA R. WRIGHT                               | Yorkville, Illinois    |
| <i>Friend to all, foe to none.</i>               |                        |

THE EVANGELICAL HOSPITAL OF CHICAGO

---



STAFF OFFICERS, 1935

Right to left: DR. FRED A. MULLER, *President*; DR. PAUL G. PAPSDORF, *Secretary*  
DR. CHRISTIAN HAUCH, *Vice President*



## “THE STAFF”

THE SUCCESS of any hospital depends very largely on the personnel and the efficiency of its staff doctors. The Evangelical Hospital of Chicago has been and is yet very fortunate in the selection and the appointment of its staff doctors. The fealty and loyalty of the men who in the past have practiced their profession in the various fields of the medical art has always been of a very high standing, insuring the hospital at all times of the requisite number of patients to successfully operate the hospital and at the same time insuring the patients of the highest type of service and attention on the part of the attending physician. The original staff consisted of the following men:

J. BRENNEMAN	F. C. EGGERT	G. H. MUNDT	C. A. STEVENS
W. H. BUHLIG	F. MENGE	W. O. RICKFORT	J. A. WASKA
A. R. EDWARDS	W. E. MORGAN	E. R. SCHOLTEN	C. F. WEINBERGER

Of these, Drs. Eggert, Scholten, and Stevens have entered into their reward. Of the original staff there are still with us the following: *Drs. G. H. Mundt, W. H. Buhlig, J. A. Waska, W. O. Rickfort and C. F. Weinberger.*

From small beginnings we have grown into a very formidable staff divided into three distinct groups: Attending Staff, Associate Staff, and the Junior Associate Staff. When members of the Attending Staff have reached the age limit of 60 they are relieved from active staff service but still serve the hospital staff in an advisory capacity and are known as the Consulting Staff.

### CONSULTING STAFF

H. H. HAGEY	J. A. WASKA	C. F. WEINBERGER
-------------	-------------	------------------

### ATTENDING STAFF

F. A. BERRY	H. G. HARDT	E. A. MILLER	P. G. PAPSDORF
W. H. BUHLIG	C. D. HAUCH	F. H. MULLER	F. M. PHIFER
B. C. CUSHWAY	P. E. HOPKINS	G. H. MUNDT	W. O. RICKFORT
J. W. DAVIS	A. G. JOHNSON	J. H. O'NEIL	R. C. SCHLUETER
P. A. DELANEY	G. E. JOHNSON	E. J. O'NEILL	J. R. SMITH
G. A. DROLSOM	K. M. MAYER	CHAS. PAPIK	A. C. WENDT

### ASSOCIATE STAFF

J. ADLER	M. J. FILIPIAK	J. E. McGUIGAN	C. L. SCHMIDT
J. L. ALBRIGHT	F. F. FRAIDER	G. R. NICHOLS	O. W. SCHREINER
L. B. BELL	J. A. GAZDA	C. W. OLSEN	C. O. SHALLAT
A. J. BERTASHI	A. P. HESS	J. PATEJDL	W. W. SITTLER
E. H. BLAIR	P. C. JOHANNES	A. G. PETERS	A. J. SULLIVAN
T. L. BRADEL	THEO. JOHNSTON	R. W. POBORSKY	R. J. THOMA
R. J. BROUILLET	T. J. KASTER	A. J. POK	F. S. TUFTS
J. L. CANAVAN	R. LANGDON	CHAS. POULSON	J. VAN EPPS
O. O. COPPOCK	H. MACKOFF	W. L. SACHTLEBEN	P. J. WERNER
T. A. DALY	R. J. MAIER	A. D. SCHICK	F. WOJNIAK
E. J. DEVINE	W. J. MARVEL	F. J. SCHICK	L. A. ZELEZINSKI
A. FALLER	T. C. McGONAGLE	V. W. SCHICK	M. F. ZIEMER

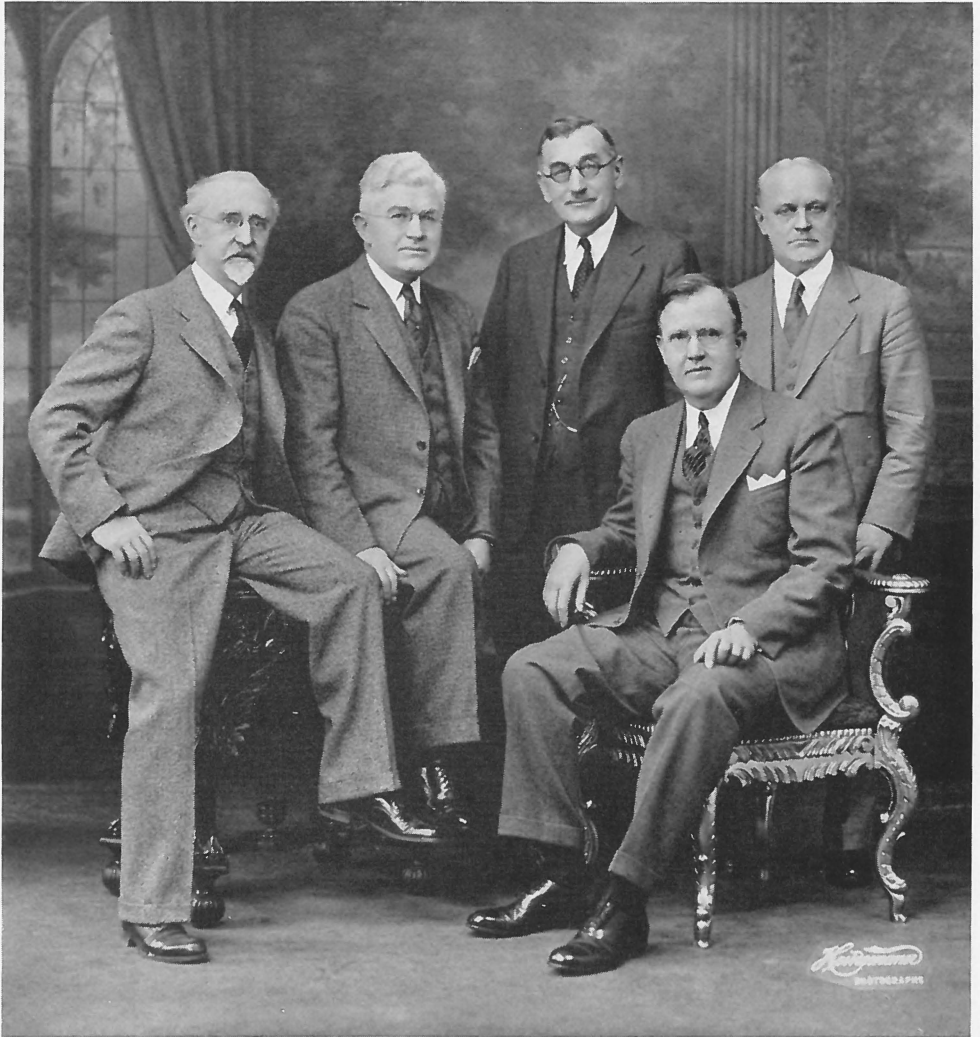
### JUNIOR ASSOCIATE STAFF

G. BILEK	J. M. JOHNSON	R. W. OVERBY	A. L. STEARNS
A. GAREISS	F. H. McGUIRE	F. SENDER	P. H. WYCKOFF
G. A. INGRISH			F. SZYMCAK



THE EVANGELICAL HOSPITAL OF CHICAGO

---



THE "OLD GUARD" FROM THE STAFF OF 1910

Seated in Chair: DR. G. H. MUNDT

DR. J. A. WASKA

DR. C. F. WEINBERGER

DR. W. H. BUHLIG

DR. W. O. RICKFORT

## INTERNES

CLOSELY connected with the history of a hospital is the service given to the institution by the internes, the young doctors who are chosen from the ranks of accredited medical schools and approved by the Council of Medical Education of the American Medical Association. These young men receive their fifth year of training in medicine and while they receive the finishing touches of their medical training and have an opportunity to familiarize themselves with the practice of their profession, they also at the same time give their services to the patients and the attending physicians.

This service is highly valued and our appreciation is herewith expressed to the men who have served their internship in our hospital in the years of its history.

1912	1919	1927	1932
A. J. PROMINSKI	R. J. THOMA	O. H. FRIEDEMAAN	H. J. BELL
H. E. STOWELL	B. GOLDFIELD	L. A. ZELEZINSKI	E. ROSS
W. J. THOMPSON		A. A. GOLDSMITH	H. X. RUBIN
E. A. BREDLAU	1920	F. E. DUNCAN	F. C. VON BRAUCHITSCH
	A. J. POK	1928	R. E. ELLIOT
1913	1921	E. H. BLAIR	
C. SPROC	B. F. GARNITZ	W. W. SITTLER	1933
C. E. FLACK	D. I. LEWIS	A. P. HESS	W. C. CROWDER
		J. VAN EPPS	H. D. HODGES
1914	1922	C. T. LEWERENZ	J. FISHMAN
R. DAVID	S. WEISS	1929	S. D. RICHMOND
X. CONN	A. J. BERTASH	G. W. ABBOTT	E. G. OLMANSON
		V. W. SHICK	I. HARTER
1915	1923	D. W. THORUP	
O. KOCH	J. A. ANTE	M. O. LANAM	1934
R. BOEHM		G. C. TEDROW	F. J. WALL
A. SCHULZE		G. W. DOSTER	K. W. COOK
	1924	1930	J. L. FRETZ
1916	J. B. JACOBS	R. A. BARTELS	K. E. HOHMAN
O. A. ROLLINS	F. A. POLESKY	G. J. GORE	C. H. TAYLOR
X. SCHMIDT		S. SHAPIRO	C. H. HENARD
P. E. HOPKINS	1925	G. J. BILEK	
	X. WOLF	A. L. STEARNS	1935
1917	X. ANDERSON	1931	L. J. ERLANDSON
B. AUGUSTUS		M. D. BARTHOLOMEW	H. H. HARRIS
M. T. STRIKOL	1926	R. BROWN	H. S. HEERSMA
	M. Y. LEVY	R. M. HOHMAN	T. O. HUFF
1918	H. MACKOFF	S. SHAPIRO	W. R. MARVEL
A. H. FINK	C. O. SHALLAT	G. A. BURCKART	E. H. WEIS
S. AXELRAD	M. H. TUREK		

In summarizing the interne situation in the past ten years it might be interesting to note here that 80% had college degrees, other than M. D., and the average age was over 27. After completing their internship 50% established their practice in our community, another 15% practice in other parts of Chicago; the remainder have gone to other parts of the state or to other states. Sixteen former internes are on one or the other of our hospital staffs.

THE EVANGELICAL HOSPITAL OF CHICAGO

---



A CORNER OF THE NURSERY



CLASS AND LECTURE ROOM

## ALUMNÆ ASSOCIATION

**M**EMBERSHIP in the Evangelical Hospital of Chicago Alumnae Association subsequent to state registration automatically confers membership in the District, State and National Nursing Organizations, and eligibility for participation in various nursing fields such as Red Cross, Army and Navy Nursing Services, Institutional and Social Service work, Public Health and Private Duty Nursing.

### GRADUATES of EVANGELICAL HOSPITAL SCHOOL for NURSING

1915  
GERTRUDE SCHUCHERT  
MINNIE VOLZ  
ALMA WIEGMANN-LEE

1916  
AMANDA GEMEINHARDT-DAVID  
CATHERINE GEMEINHARDT  
EMILIE HEUER

1917  
OLGA GERHARDT  
ROSE MAST  
MARGARET MEYERS-MATTIX

1918  
HEARTHA BOLLENS-STOYCOFF  
LEONORE NUESSELE-HOPKINS  
IDA NEUCKS  
FRIEDA PLATH  
MARIE RUDNICK  
OLGA SILBERMAN-McCLELLAN

1919  
ANNA KNICKREHM  
BERTHA FUHRMANN-KOEPKE  
LYDIA BARTZ PLATH  
MARIE SUTTER-TOUVE  
ESTHER ZUMDAHL

1920  
FRIEDA BECKER  
HELEN GARTNER  
ESTHER SILBERMAN-STEINHOFF  
SOPHIE WITTLIEF

1921  
SOPHIE GAARDE  
MALINDA HACKER-PETERSON  
MINA HAUSMANN  
BERTHA LENZ-MULHERN  
MARIE MAYER-THOMA  
ERNA MIEHLKE

1922  
OLGA BUTLER  
MINNIE BOLLENS-KOBLE  
THERESA KRUMDICK-SCHLUETER  
LORRAINE STASSEN  
SADIE VOIGHT-SWANSON

1923  
MARY GOOD-BRENNEMAN  
MARTHA BRUECKNER-WEBBER  
SYLVIA CONRAD-KURTZ  
RUTH COLLINS-DE PREE  
JENNIE HAGEMAN-COMSTOCK  
MARTHA KOEPKE-BURNS  
ALVINA SCHILLING  
FRIEDA UHLHORN-STURMAN  
VICTORIA WIECHECKI-JURGELONIS

1924  
LILLIAN ANDERSON-NOREEN  
ANNA BAUMLER  
MARGARETTE BUFFINGTON  
ELSIE HOFF-BLISS

HELEN KOENNING-SPILSBURY  
IRENE PARKER  
LUCILLE ZENDER-GRAHAM  
IRENE DYKSTRA

1925  
EVA GERULIS-STACK  
VERA LITTGE-SIMPSON  
STELLA PAUL-FITZGERALD  
HEDWIG SCHROEDEL-JONES  
FLORENCE UHLHORN

1926  
RUTH CONRAD-JOHNSON  
ANNA FILTER  
LORELLA GLAEFKE  
ERICA HARTER  
HILDEGARD HARTER-HODGES  
MINNE KORT  
ESTHER RABE-BOWEN  
FRIEDA SCHLOZ

1927  
MATHILDA GRAYSON-HALLMAN  
BERNICE RIECHMAN  
CHRISTINE RIECHMAN-SCHLUNDT  
EDNA WOLF-PARKER  
OGUERITE BREMER-SCHLUNDT  
MARGARET BURDZILAUSKAS-SWATASH  
FLORENCE FELKER-HESS  
ANNA LASCHOB  
DOROTHEA SERVATIUS  
FRIEDA WOISCHWILL

1928  
ADELA BACKOFF-WESTENBERGER  
NELLIE PETKUS-RUSSEL  
THELMA POWER  
MARIE HEITZ  
MABEL WILSON-MARTH  
VERA MALLERGREN  
ROSE HUCK-CRENSHAW  
EMILY SELHEIM-ANDERSON  
IDA GRUNWALD-SHOWE  
HELEN JANS-BAKER  
VERONICA WABOL  
ANNA MIEHLKE-FRIEDEMANN

1929  
ROSA M. SCHUESSLER  
ANNE PREIFER  
LOUISE C. STOCK  
IRENE C. KEIM-SCHICK  
HELEN C. VERMAAS  
EMILY F. BRADLEY-MILLER  
ELLEN L. PEARSON  
MARGARET W. MYERS  
PEGGY A. SCHOFIELD  
ALICE H. KRIEGER  
RUBY S. BRAMER-MONTY  
LEONE M. GESEL-CALVERT  
AMANDA A. GAST-BOSS  
HELEN A. ANACKER  
ERICA M. NIEKRENZ-VOS  
GERTRUDE M. NELSON-JOHNSON  
KAREN S. NIELSEN-CROSSEN  
IDA VAN VUREN-FERGUSON  
CLARA W. CARLIN-DYKEMA



INTERMEDIATE CLASS OF TRAINING SCHOOL



# GRADUATES of EVANGELICAL HOSPITAL SCHOOL for NURSING

## CONTINUED

1930

VELMA BUSSE-UPTON  
RUTH CAMERON  
HAZEL CAMPBELL-BENNET  
BERTHA CHRISTIANSON-HAMILTON  
EDNA FREYTAG  
EDNA GEISER  
EMMA JENSEN  
ELIZABETH KISTLER-RICE  
ESTELLE KORANGA  
MARY LUKASESKY  
ELSIE MARSH  
CLARA NIMMERFROH  
AMELIA ODELL-CONNORS  
HAZEL AUSEN-PELISKI  
EDNA STAUFFER  
LOIS TURNQUIST-REZANKA  
GENEVA WHITE

1931

MILDRED BIERBAUM  
ALBERTA BUCKLIN-CRATTY  
ALVINA BURGE-MUELLER  
KARIN CARLSON-MOLINE  
ADELE DARESH  
LUCILLE EILERS  
BERTHA FROOK  
LAVINA JENKINS  
GEORGIA JOHNSTON  
FLORENCE KING  
ESTHER KOMMNICK  
MABEL LINDEMANN  
MILDRED MUCHA  
EDITH OLDENBURG  
IRENE SINGER-MUELLER  
AVRIL ULLOM  
FRIEDA WIDEN-LARSEN  
RUTH WOISCHWILL

1932

CLARA ARNDT  
JEANETTE BUBLITZ-RICKHOFF  
ALICE FELKER-ROOKS  
PHYLLIS GEISER  
ELEANORE GREEN  
ROSSALEE HARRISS  
EDITH HUNNELL  
HILDA KRUGER  
HELEN KUCH  
MILDRED LA JEUNESSE  
HELEN LINDEMANN  
LORETTA NOLTENSMEIER  
ELLA PEDERSEN  
JOAN PETERSON  
RUTH PETERSON  
HERMA REIMER  
WINNIE SEYLAR  
HELEN SIELAFF  
ADA MAE STEINER  
FRANCES STIGLICH  
GOLDIE STIVERS  
MARGARET STRANDT-DUKE

1933

LYDIA AHRENS  
ELEANORE ANDERSON  
ETHEL BABCOCK-GUEDE  
MARIE BIERBAUM-SCHRAMM  
MARGARET BLOESCH  
ANNA MAE BREMER  
CECIL BURDICK  
BERNICE DAHMS  
FLORENCE FAHLBUSCH  
RUBY GEISER  
HILDA HAGEMAN  
LAURA HAMANN  
ALBERTA HASKINS-DANNELLS  
GERTRUDE JENSEN  
CONSTANCE LINDGREN-JOHNSON  
HELEN MATTSON  
MARTHA McMILLAN  
ANNA OCHABA  
ERNA SCHULTZ  
EMMA JANE SCOTT  
NELLY SEMON  
CLARA SPOERI-AHNER  
PEARL STENGEL  
ERMA WAGNER

1934

NELLE AVERY  
FERN BAHR-BOOTS  
EVELYN BERG  
EVELYN BOEHNING  
ESTHER ERICKSON  
ESTHER FAHR  
RUTH HAMILTON  
GLENDA HUGUENIN  
GRACE NELSON  
ARLENE PERTEIT  
SOPHIE PETERSON  
LOUISE SEDLACK  
VIOLA SEEBERGER  
JEANNETTE TERRILL  
GOLDIE WALK  
ESTELLE WYMAN

1935

HELEN BIBB  
ELJIE BURGCHARDT  
VERNA COOK  
JOSEPHINE DUCHOWICZ  
ANN FOLKEDAHL  
FRANES FLEMING  
MARY LOUISE HAINES  
PAULA KUEHNERT  
LEONA PFEIFFER  
ALBERTHA STAFFEL  
HENRIETTA TECKENBROCK  
MARION WITT  
VIRGINIA WRIGHT  
PHYLLIS JOHNSON  
SYLVIA HOFFMAN

## OFFICERS—ALUMNÆ ASSOCIATION

BERTHA FROOK	.	.	.	.	.	.	.	.	.	.	.	.	.	.	.	.	.	President
GOLDIE STIVERS	.	.	.	.	.	.	.	.	.	.	.	.	.	.	.	.	.	Vice President
ELEANORE ANDERSON	.	.	.	.	.	.	.	.	.	.	.	.	.	.	.	.	.	Recording Secretary
HILDA KRUGER	.	.	.	.	.	.	.	.	.	.	.	.	.	.	.	.	.	Corresponding Secretary
EDITH OLDENBURG	.	.	.	.	.	.	.	.	.	.	.	.	.	.	.	.	.	Treasurer



JUNIOR CLASS OF TRAINING SCHOOL

## RAMBLING THROUGH OUR HOSPITAL

### HOSPITAL BUILDINGS

THE FIRST unit, now known as the Annex, is a two-story building with basement, erected in 1910, and contains patients' rooms, wards, administration and internes' quarters, X-Ray Department, and a spacious lobby. In the basement, a beautiful dining room for the nurses was built when this building was completely remodeled in 1929.

The South Wing of the new building was built in 1923 and the North Wing in 1928 — both new hospital buildings are of concrete fireproof construction. The first and second floors contain general patients' rooms, while part of the third and the entire fourth floor are used for obstetrical cases. Both floors, the third as well as the fourth floor, have a nursery with baby bathroom attached; also an instruction room where the young mothers are instructed in the care of their babies. The most modern equipment is used in the baby bathroom to safeguard the health of the newborn.

On both floors are complete equipment for the sterilization of babies' bottles and other instruments and utensils used for babies care. There is also an automatic heating unit which brings the baby's feeding up to the proper temperature. A children's ward has also been installed on the third floor, arranged and equipped for their comfort.

### LABORATORY

On the main floor a strictly modern laboratory is maintained where all tests necessary for our patients are made. This laboratory is equipped with the latest apparatus for making absolutely accurate tests.

### X-RAY DEPARTMENT

The X-Ray Department is equipped with 4 up-to-date X-Ray machines, where any type of X-Ray picture can be made, not only for our patients but for out patients as well. Non-inflammable films are used in the X-Ray Department. In addition to the above equipment, one large deep therapy machine is installed for the treatment of cancer and other diseases where high voltages are necessary. The X-Ray Department also has three ultra violet-ray machines, one infra-red ray, and one Morse wave, equipped for treatment of various diseases.

### KITCHEN

A modern central kitchen has been installed in the basement of the new hospital. From this kitchen all the patients' meals are served neatly arranged on sanitary trays, by means of three electrically operated service lifts, which send the trays to the various floors. Each tray has the patient's name and room number, together with a marker indicating the type of food to be served to the patient, as prescribed by the doctor. In this manner we are able to serve all our patients with hot food in 25 minutes. As soon as the trays arrive on the respective floors, an



INFORMATION DESK AND ELEVATOR APPROACH



automatic signal is given and the nurses immediately carry these trays to the patients. The empty trays and dishes are returned to the central kitchen by means of the service lifts, checked by the dietitian, and thoroughly washed and sterilized.

#### FOOD

Our hospital has prided itself since its beginning on serving nothing but the best foods obtainable — this food is prepared scientifically in steam cookers. By this method all the vitamins are left in the food. When the food is prepared it is kept hot in steam tables until served. The preparation of every food item is under the supervision and direction of a graduate dietitian, thus assuring the patients a well balanced diet, clean palatable food properly prepared. The food products are preserved in sanitary refrigerators automatically controlled.

#### LAUNDRY

The laundry is equipped with the most modern washing, drying, ironing machines and presses. All linens from the entire hospital are sent to the laundry by means of an aluminum chute which has an opening on every floor. The operating room laundry is kept apart, being washed and sterilized in a separate washer. The rest of the laundry, after being sorted, is washed in large machines, thoroughly sterilized, dried by means of steam driers and ironed by a steam heated ironer. This assures sanitary clean linen at all times. In this laundry 5000 pieces of linen are washed, sterilized, and ironed daily.

#### WARDS AND PRIVATE ROOMS

The wards and private rooms are painted in bright colors to make them as homelike as possible and to eliminate the hospital atmosphere. Each room has individual lockers for the patient's clothes. The beds are equipped with spring mattresses and crank operated head and foot rests, so that the patient may be placed in any position desired. The nurses' call system is unique in its operation —when the patient presses the button attached to the signal cord, an electric bulb lights up over the door of the patient's room and also a signal light at the nurses' station signifying that the patient desires attention. Neither of the two signal lights can be shut off without the nurse going to the patient's bedside and releasing the button which the patient pressed. This signal system was chosen because it assures the patients that they will receive prompt service.

At the end of each floor an ultra-violet quartz glazed solarium is provided for the convenience of convalescents and visitors.

#### AIR CONDITIONED ROOM

One of the large corner rooms is equipped with an up-to-date air conditioning unit containing heating and cooling coils, humidifier, dehumidifiers, and Ozone equipment. This room is used for the treatment of Hay Fever, Pneumonia, and





TYPICAL CORRIDOR

heart diseases. This is the first time that any hospital has established such a room. The temperature of this room is accurately controlled by a room thermostat both winter and summer, also the humidity by a humidistat mounted on the wall. The pollen which are the cause of hay fever are filtered out of the fresh incoming air to the extent of 98%. Pneumonia cases are provided with a humid room and cool temperature. The room is held under a slight air pressure so that no outside air can filter in through doors and windows.

All rooms in the entire hospital are connected to a ventilating system which draws the foul air from them while fresh air is admitted through the corridors, thus avoiding drafts.

#### OPERATING ROOMS

The hospital contains three major operating rooms, one eye, ear, nose and throat room, one minor operating room, and one fracture room. The walls of the operating rooms are faced with green tile. The floors of all operating rooms are non-absorbing flint tile. Adjacent to each operating room a sterilizing unit is installed in which all the instruments and utensils used in the operating room are sterilized before the operation begins. The water used in the operating room is also sterilized. The doctor's scrub-up room is located adjacent to the operating room. All doctors' and nurses' gowns worn in the operating room are sterilized in autoclaves and are discarded after each operation. All linens, dressings, sponges, cotton, etc., used in the operating rooms, are sterilized in air tight drums which are kept closed until the materials they contain are used in the operating room by the surgeon.

#### MATERNITY DEPARTMENT

In the maternity department a separate set of sterilizers is installed which takes care of the materials this department uses. This department, as well as the operating room department, is closed off from the corridors by glass doors. These doors, as well as all doors to patients' rooms, are wide enough so that if necessary a patient can be transferred, in his bed, from one room to another, or from one floor to any other floor or any department in the institution. The maternity department has three delivery rooms, two labor rooms, shower bath and toilet facilities. In the delivery room before being placed in its crib, the baby is tagged on the ankle and back for identification.

#### THE POWER PLANT

A power plant, equipped with all modern machinery, refrigerating, heating, laundering and sterilizing, is located North and adjacent to the hospital. A large under-ground tunnel, extending from the hospital to the nurses' home, supplies this institution with steam, hot and cold water, from the power plant.

#### PATIENTS' WELFARE

The entire hospital was built with one point in view, namely, the patient's welfare must come first.



THE SOLARIUM

## WOMANS' AUXILIARY

THE WOMANS' AUXILIARY of the Evangelical Hospital was organized "to aid the corporate Board of Directors of the Hospital" in February, 1915. Early in January of that year the "Staff Club" composed of the wives of the physicians on the "Hospital Staff" sent letters to the various Evangelical churches of the city asking that representatives meet to consider the organizing of an auxiliary.

The members of the so-called Staff Club who issued the first call for a meeting were: Mrs. C. A. Stevens, President; Mrs. J. R. MacNamara, Secretary and Treasurer; Mrs. J. A. Waska, Mrs. C. F. Weinberger, Mrs. G. H. Mundt, Mrs. G. G. Knapp, and Mrs. W. H. Buhlig. This group had met regularly for over a year sewing and earning money for the benefit of the hospital. Although only seven in number their assistance was a great help to us. At the same time groups of women were working in many Evangelical churches. With the thought in mind that these groups banded together in one large organization could be of greater assistance to the hospital, the organization of an auxiliary was proposed and resulted in the adoption of a Constitution and By-Laws and thus the auxiliary was launched with Mrs. C. A. Stevens as its President. In the course of four years this organization had grown to a membership of over 400. Particular credit and thanks is due to the seven members of the Staff Club who interested the wives of the Evangelical pastors and began their work unceasingly for the success of the Womens' Auxiliary.

The requirements for membership are: an interest in the work of the hospital and the payment of an annual dues in the sum of \$1.00. Life membership can be obtained by the payment of \$25.00 which sum is placed in the "Life Membership Fund" which has grown to the sum of \$2500.00. The work of the Womens' Auxiliary was most helpful in the campaign and building program for a larger Evangelical Hospital. This organization was instrumental in raising \$20,000.00 for the construction of the sixth floor Solarium and roof garden of the South wing of the new hospital which will ever stand as a memorial to the loyalty and love of the members of our Womens' Auxiliary.

The outstanding events in the life of this auxiliary are the mid-winter *Birthday Party* when all members contribute an amount of money equal to their age — *Easter* with its bountiful egg shower for which the hospital is deeply grateful — *Thanksgiving Social* when preserves, canned fruits, and other delicacies are given for the refreshing of the weary. A special band of workers meets in the forenoon of the meeting day and sews for the hospital, making pneumonia jackets, T-binders, and other furnishings, thereby contributing in a substantial way to the successful management of the institution.

We cannot sing the praises of our good mothers too much for they make a very definite contribution of love and service to the hospital and the nurses' residence. Gratefully we say thank you and God bless you.

The present officers of this organization are:

MRS. HULDA KNAPHURST . . . . .	President
MRS. MARIE KOENIG . . . . .	Vice President
MRS. A. E. HOHMAN . . . . .	Secretary
MRS. ELSIE LUEDER . . . . .	Treasurer
MRS. MARY CANTUP . . . . .	Corresponding Secretary



## STATISTICS

IN THE years gone by the portals of our hospital swung wide open to all those who were in need of hospital care who come to our institution, either through the emergency door or through recommendation of the attending physician. In the 25 years of hospital operation over 100,129 have been admitted as patients into the hospital and have either been nursed back to health and left the hospital with new hope and courage in the heart or they have been permitted by the grace of God to enter into the life where sickness or sorrow is no more. 15,018 babies have seen the light of day in our hospital and entered upon their pathway of life through the portals of our institution.

It may be of interest to our constituency to read the number of patients' admissions and the number of births at the larger hospitals of Chicago showing for the year 1934 that the Evangelical Hospital of Chicago admitted 6736 and recorded 969 births which numbers reveal the fact that we rank as number 8 in the number of patients admitted and we rank as number 4 in the number of births among all the hospitals in Chicago.



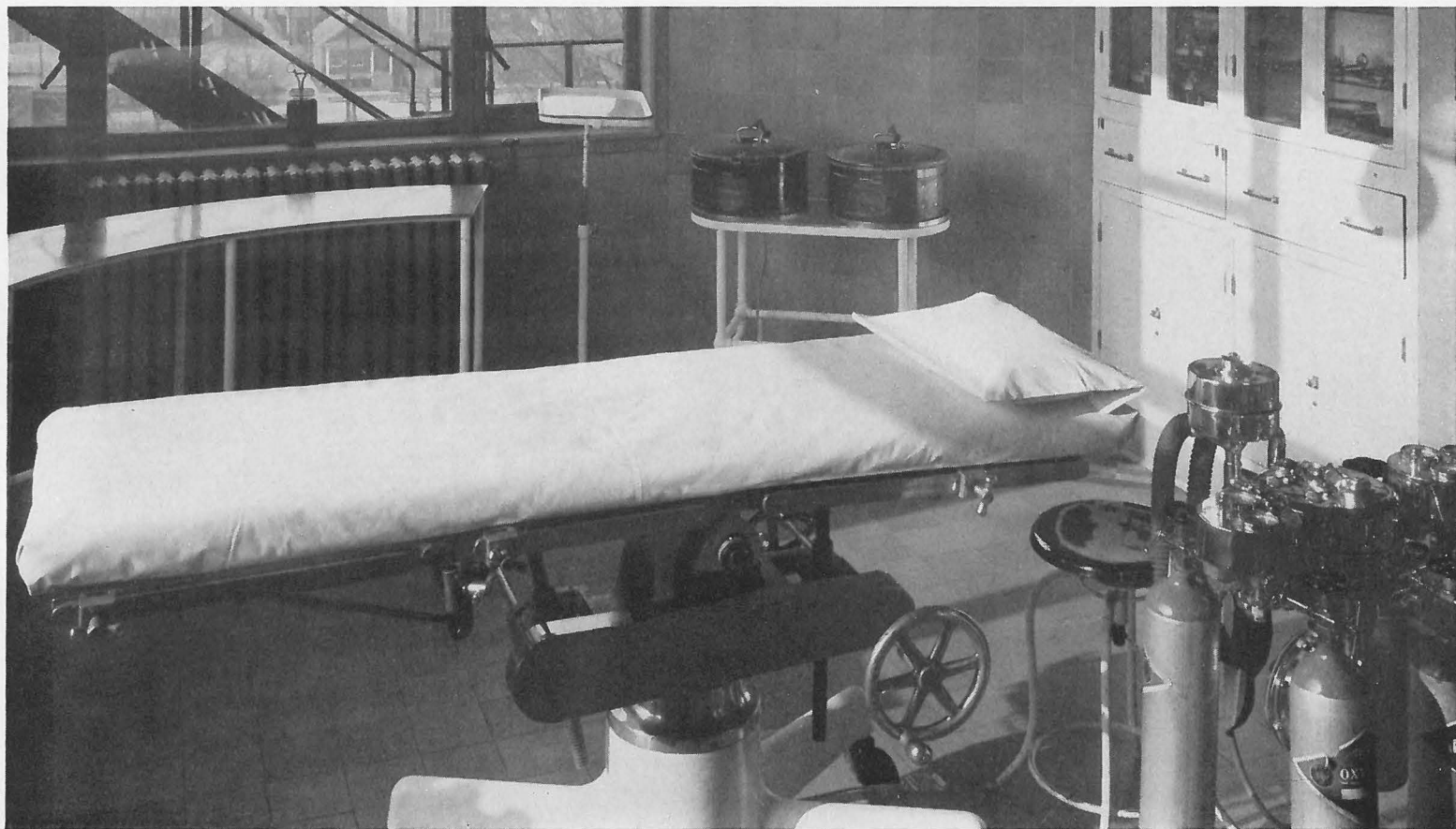
NURSES' DINING ROOM



## A STORY OF GROWTH IN FIGURES

<i>Year</i>	<i>No. of Patients</i>	<i>No. of Births</i>	<i>Income</i>	<i>Operative Cost</i>	<i>Charity</i>
1911	177	6	\$ 3,553.51	\$ 2,581.45	\$ 235.00
1912	1008	33	20,903.35	15,185.14	1,209.00
1913	1151	59	24,038.84	17,463.10	1,341.99
1914	1394	71	32,550.95	28,132.11	4,191.75
1915	1649	103	41,798.24	36,157.12	3,965.90
1916	2206	183	55,138.33	43,623.25	6,291.80
1917	2462	188	55,745.73	47,838.69	5,315.90
1918	2348	253	62,595.95	56,745.28	6,834.80
1919	2927	287	81,657.95	75,444.73	4,308.20
1920	3000	338	86,018.99	91,151.80	5,668.90
1921	2772	404	103,780.09	90,100.26	5,052.50
1922	2643	465	104,824.39	97,097.27	3,722.14
1923	3018	560	133,141.15	129,806.07	4,973.94
1924	4274	821	212,775.51	201,544.98	8,733.15
1925	5397	918	252,091.42	201,547.65	10,721.58
1926	6332	1044	298,281.54	216,170.59	6,697.15
1927	6965	1172	326,970.63	235,174.56	9,201.94
1928	7643	1319	365,710.25	260,201.62	12,478.59
1929	8088	1369	388,684.26	308,741.74	35,532.55
1930	7725	1417	360,384.45	282,368.70	27,351.70
1931	7014	1074	304,106.74	253,528.20	20,783.37
1932	5735	835	234,349.17	203,108.11	26,198.66
1933	5844	862	225,902.78	197,746.59	31,576.77
1934	6736	969	246,018.20	215,083.80	37,462.32
			<hr/>	<hr/>	<hr/>
			\$4,021,022.42	\$3,314,542.81	\$279,849.60
*1935	1621	268			
	<hr/>	<hr/>			
	100,129	15,018			

\* As of April 4, 1935, at Noon.



TYPICAL OPERATING ROOM

## “ENDOWMENTS”

THE GLORY of a hospital should spell “CHARITY” and “ENDOWMENTS” as they give the tangible evidence of the benevolent spirit of its constituency. More “Charity” will be possible to be given if “Endowments” will furnish the means.

In grateful acknowledgement we can record the following bequests which have recently been incorporated into an Endowment Fund for the Evangelical Hospital of Chicago.

GUSTAV BUNGE . . . . .	\$ 1,000.00
SCHNIGLAU ENDOWMENT FUND . . . . .	15,000.00

The hospital is receiving the income of the Woman’s Auxiliary Endowment Fund, representing a capital of \$2500.00; as also the revenue from the Nurses’ Alumnæ Endowment Fund which represents a capital of \$2000.00.

More lasting and enduring than a bronze or granite memorial in some cemetery, is an endowment to the Evangelical Hospital of Chicago where some of your life’s achievements will serve your Christ and your fellowmen long after you have ceased from your labors. Those who will benefit by this, your life investment, will call you “BLESSED” because your endowment will prove a “BLESSING” to those who need the touch of a loving hand.

### FORM OF BEQUEST TO BE EMBODIED IN YOUR WILL

*I give and bequeath to the EVANGELICAL HOSPITAL ASSOCIATION OF CHICAGO — incorporated under the laws of the State of Illinois — the sum of \$\_\_\_\_\_ for the object and purpose of said Association.*

*The receipt of the Treasurer therefore shall be a sufficient discharge to my Executors for the same.*



AUDITORIUM, NURSES' RESIDENCE

